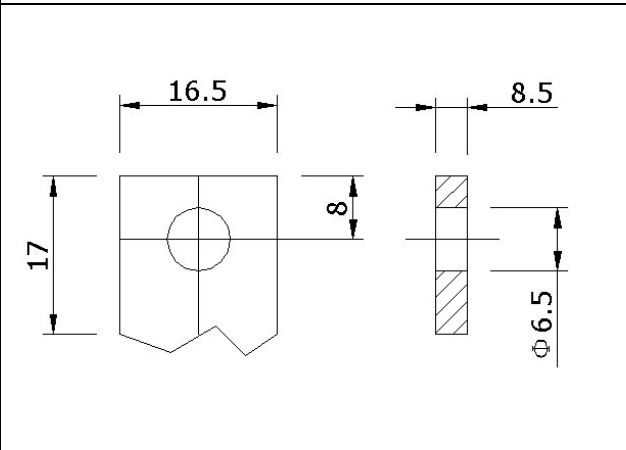
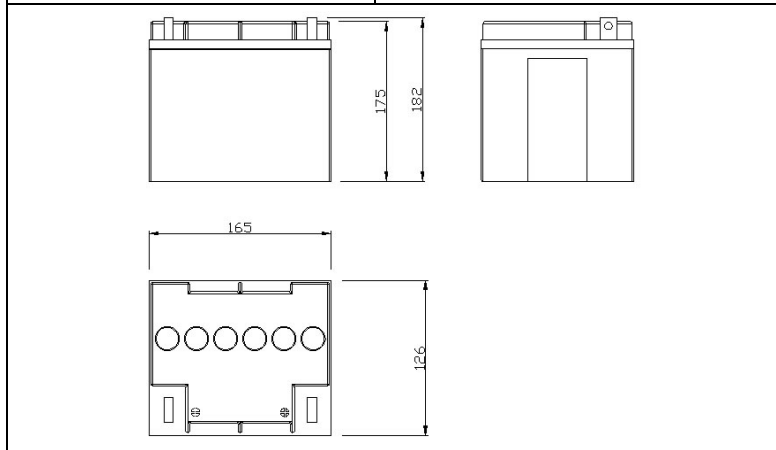




NPC26-12(12V26Ah)

PHYSICAL SPECIFICATION

Nominal Voltage		12V
Nominal Capacity (10HR)		26Ah
Dimension	Length	165±1mm (6.5 inches)
	Width	126±1mm (4.96 inches)
	Container Height	175±1mm (6.89 inches)
	Total Height	182±1mm (7.17 inches)
Weight		Approx. 9.1 Kg (20.04lbs)
Standard Terminal		Bolt-and-nuts terminal Bolt Type: M5, M5*16



ELECTRICAL SPECIFICATION

Characteristics		
Capacity	20 hour rate (1.3A)	28Ah
	10 hour rate (2.6A)	26Ah
	5 hour rate (4.42A)	22Ah
	1 hour rate (15.6A)	16Ah
Capacity affected by temperature	40°C (104 °F)	102%
	25°C (77 °F)	100%
	0°C (32 °F)	85%
Internal Resistance	Full charged battery (25°C, 77 °F) 13.2mΩ	
Designed life	≥700 Cycles @ 50% D.O.D	
Self Discharge	4% of capacity declined per month at (25°C)	
Constant Voltage Charge	Cycle	Initial Charging Current less than 6.5A Voltage 14.4~15.0V at 25°C (77 °F) Temperature Coefficient -5mV/°C
	Standby	No limit on Initial Charging Current Voltage 13.5~13.8V at 25°C (77 °F) Temperature Coefficient -3.3mV/°C

