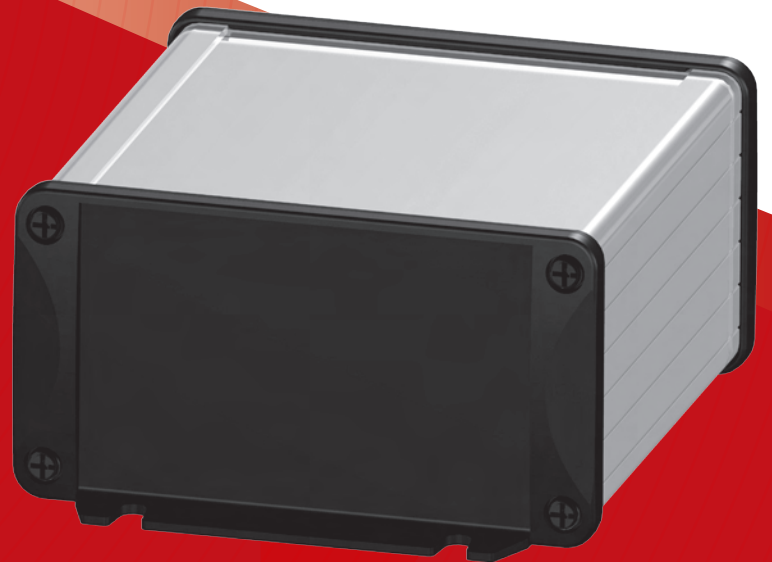




HAMMOND
MANUFACTURING™



RM series



1457 series

Watertight & EMI/RFI Extruded with Diecast End Panels (1457 Series)

Application:

- Designed to house PC boards for use as an electronic instrument enclosure
- PC boards mount horizontally by sliding into internal extruded slots
- Provides protection from the ingress of dirt, dust, and/or water
- Profiles feature recessed areas for surface or keypad membranes

Finish

- Extruded profile available in durable textured black paint or clear anodizing finish
- Diecast end panels are available in durable textured black paint finish

Options

- Custom extrusion lengths available upon request

Construction

- Rugged case made from extruded aluminum with a minimum thickness of 0.6" (1.5mm)
- Includes two diecast aluminum end panels, available with flange (for shelf or wall mounting) or without flange
- Hardware and self-adhesive rubber feet included
- Watertight version includes o-ring screw seals and closed cell polyethylene foam gaskets with adhesive to protect from ingress of dirt, dust, and water. Designed to meet IP 65
- EMI/RFI version includes o-ring screw seals and EMI foam gaskets w/ conductive adhesive to protect from ingress of dirt and dust. Designed to meet IP 54



1457 Watertight Aluminum Enclosure Series

Part Number				Extrusion Dimensions			Max PCB Size		
w / Standard End Panels		w / Flanged End Panels		UNITS	L	W	H	L	W
Clear Anodized	Textured Black Paint	Clear Anodized	Textured Black Paint						
1457C801	1457C801BK	1457C802	1457C802BK	mm inch	80 3.15	59 2.32	30.9 1.21	80 3.15	55.5 2.18
1457C1201	1457C1201BK	1457C1202	1457C1202BK	mm inch	120 4.73	59 2.32	30.9 1.21	120 4.73	55.5 2.18
1457K1201	1457K1201BK	1457K1202	1457K1202BK	mm inch	120 4.73	84 3.30	44.1 1.73	120 6.30	80.5 3.17
1457K1601	1457K1601BK	1457K1602	1457K1602BK	mm inch	160 6.30	84 3.30	44.1 1.73	160 6.30	80.5 3.17
1457N1201	1457N1201BK	1457N1202	1457N1202BK	mm inch	120 4.73	104 4.09	54.6 2.15	120 4.73	100.5 3.95
1457N1601	1457N1601BK	1457N1602	1457N1602BK	mm inch	160 6.30	104 4.09	54.6 2.15	160 6.30	100.5 3.95

1457 EMI/RFI Aluminum Enclosure Series

Part Number				Extrusion Dimensions			Max PCB Size		
w / Standard End Panels		w / Flanged End Panels		UNITS	L	W	H	L	W
Clear Anodized	Textured Black Paint	Clear Anodized	Textured Black Paint						
1457C801E	1457C801EBK	1457C802E	1457C802EBK	mm inch	80 3.15	59 2.32	30.9 1.21	80 3.15	55.5 2.18
1457C1201E	1457C1201EBK	1457C1202E	1457C1202EBK	mm inch	120 4.73	59 2.32	30.9 1.21	120 4.73	55.5 2.18
1457K1201E	1457K1201EBK	1457K1202E	1457K1202EBK	mm inch	120 4.73	84 3.30	44.1 1.73	120 6.30	80.5 3.17
1457K1601E	1457K1601EBK	1457K1602E	1457K1602EBK	mm inch	160 6.30	84 3.30	44.1 1.73	160 6.30	80.5 3.17
1457N1201E	1457N1201EBK	1457N1202E	1457N1202EBK	mm inch	120 4.73	104 4.09	54.6 2.15	120 4.73	100.5 3.95
1457N1601E	1457N1601EBK	1457N1602E	1457N1602EBK	mm inch	160 6.30	104 4.09	54.6 2.15	160 6.30	100.5 3.95

19" Rack Mount / Table Top Instrument Enclosure (RM Series)

Application:

- Suitable for 19" rack-mounted or free-standing enclosure applications

Finish

- Available in durable textured black powder paint finish

Options

- Pull handles for each height also available in a black finish. (sold in pairs)
- Rear mount extension bracket kit available for 18" deep model(s)

Construction

- Light weight, all aluminum enclosure consists of a high strength extruded frame, removable top and bottom covers, and rack mounting brackets (included but optional)
- Shipped in "knock down" format, with simple assembly and disassembly
- Frame hardware, speed nuts, and self-adhesive rubber feet included
- Top and bottom covers are available solid or vented, for airflow purposes. (see part tables)

RM 3U1913SBK



RM 1U1918VBK



RM Series (19" Aluminum Rackmount / Table Top Case)

Part Number		External Dimensions			Options	
w / Solid Panels	w / Vented Panels	H	W	D	Pull Handles	Rear Bracket Kit
RM1U1908SBK	RM1U1908VBK	(1U) 1.75" (44mm)	16.6" (421mm)	8" (203mm)	1427B2BK	-
RM1U1913SBK	RM1U1913VBK	(1U) 1.75" (44mm)	16.6" (421mm)	13" (330mm)	1427B2BK	-
RM1U1918SBK	RM1U1918SBK	(1U) 1.75" (44mm)	16.6" (421mm)	18" (457mm)	1427B2BK	RM1U18BRKT
RM2U1908SBK	RM2U1908VBK	(2U) 3.50" (89mm)	16.6" (421mm)	8" (203mm)	1427E1BK	-
RM2U1913SBK	RM2U1913VBK	(2U) 3.50" (89mm)	16.6" (421mm)	13" (330mm)	1427E1BK	-
RM3U1908SBK	RM3U1908VBK	(3U) 5.25" (133mm)	16.6" (421mm)	8" (203mm)	1427P1BK	-
RM3U1913SBK	RM3U1913VBK	(3U) 5.25" (133mm)	16.6" (421mm)	13" (330mm)	1427P1BK	-

Canada & International

Hammond Manufacturing Company Limited

394 Edinburgh Rd North

Guelph, ON

N1H 1E5

Tel: (519) 822 - 2960

Fax: (519) 822 - 0715

Eml: sales@hammondmfg.com

Les Fabrications Hammond (Quebec) Inc.

4240 Rue Seré

St. Laurent, Quebec

H4T 1A6

Tel: (514) 343-9010

Fax: (514) 343-9941

Eml: quebec@hammondmfg.com

USA

Hammond Manufacturing Company Inc.

475 Cayuga Rd.

Cheektowaga, NY

14225

Tel: (716) 630-7030

Fax: (716) 630-7042

Eml: sales@hammondmfg.com

UK & Europe

Hammond Electronics Limited

1 Onslow Close

Kingsland Business Park

Basingstoke, Hampshire

RG24 8QL, England

Tel: +44 1256 812812

Fax: +44 1256 332249

Eml: sales@hammond-electronics.co.uk

Australia

Hammond Electronics Pty. Ltd.

ABN 13 099 121 981

11-13 Port Road

Queenstown, SA 5014

Tel: 61-8-8240-2244

Fax: 61-8-8240-2255

Eml: pcookson@hammondmfg.com

Visit us at

www.hammondmfg.com